



Flat 1 36A The Avenue

, London, NW6 7NP

Guide price £750,000

****Investors Only**.** Set on one of Queens Park premier roads is this 2 bedroom/2 bathroom garden flat with 856 sq of living space and a large rear garden. Offered in excellent condition throughout. Own entrance. Situated just moments away from the beautiful Queens Park with Queens Park & Brondesbury Park stations very close by. Close to an array of local shops and restaurants.

This property is currently tenanted to March 2027 with a break clause June 2026.
Rental Income £2,600 per month.

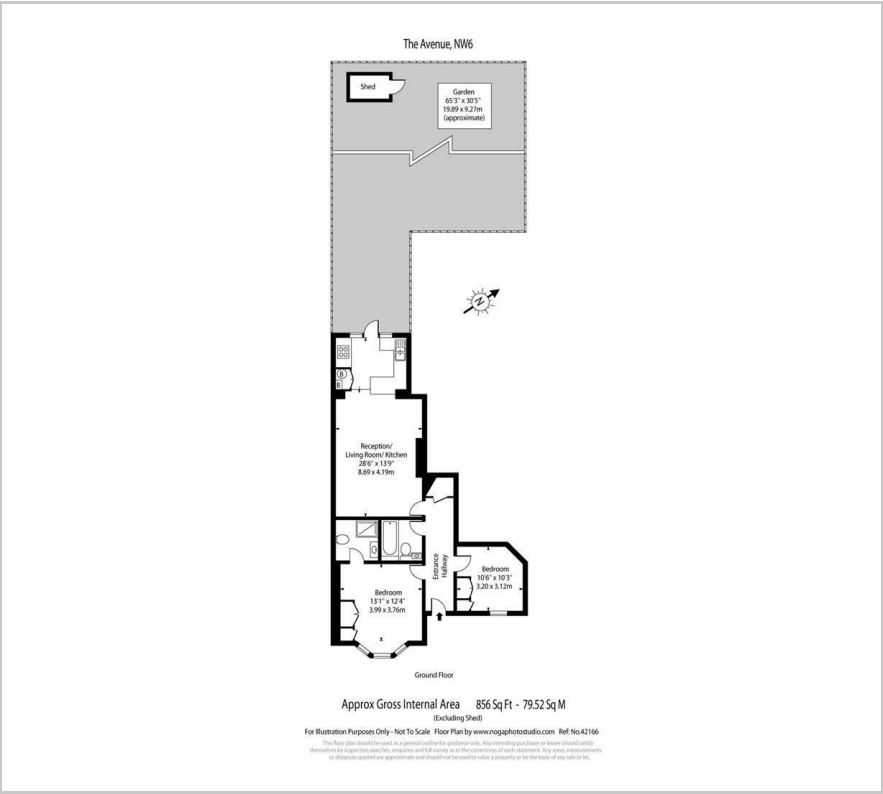
Viewing

Please contact us on 020 3198 4517 if you wish to arrange a viewing appointment for this property or require further information.

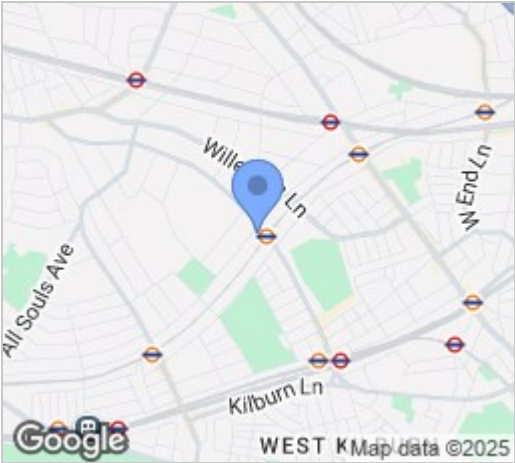
- 2 Bedrooms
- 2 Bathrooms
- Off Road Parking
- Garden
- Modern
- Great condition



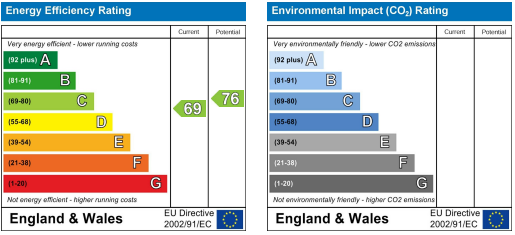
Floor Plan



Area Map



Energy Efficiency Graph



These particulars, whilst believed to be accurate are set out as a general outline only for guidance and do not constitute any part of an offer or contract. Intending purchasers should not rely on them as statements of representation of fact, but must satisfy themselves by inspection or otherwise as to their accuracy. No person in this firm's employment has the authority to make or give any representation or warranty in respect of the property.